



## Bathing establishment Fact Sheet

Bathhouse name	Angelo
Address	Viale S. Bernardini 756
City	Lido di Camaiore (LU)
Contacts	+39 335 7833030
Website	<a href="http://www.bagnoangelo.it">www.bagnoangelo.it</a>

**TESTED BY:** [Handy Superabile - Social Promotion Association](#) in summer 2023

**Please note** The following information refers to the verification date shown at the bottom of each card. **The Association** is not responsible for any significant changes made by the property after the visit.

### Summary

Bathing establishment Fact Sheet.....	1
Arrival at the facility .....	2
Private/public parking.....	2
Route from the parking lot to the main entrance .....	3
Reception.....	3
Bar/restaurant .....	4
Internal Pathways and common services .....	4
Internal Pathways.....	4
Toilet and shower accessible to guests with reduced mobility.....	4
Changing room.....	6
Beach.....	6
Children's play area.....	7
Swimming pool.....	8
Doctors' Offices/Healthcare Facilities.....	9

Project carried out with the contribution of the



Project promoted by



Regione Toscana

## Arrival at the facility

### Private/public parking

Presence of private parking	YES
Presence of parking space reserved for people with disabilities	YES
Type of parking surface	GRAVEL
Public parking nearby	YES
	



Project carried out with the contribution of the



Presidenza del  
Consiglio dei Ministri  
Ministro per la disabilità



**Route from the parking lot to the main entrance**

Route from the car park to the entrance	Flat
There are markers and tactile maps	NO
Usable door/entrance width	more than 90 cm
	

**Reception**

Umbrella booking system	<input type="checkbox"/> Via web <input checked="" type="checkbox"/> By phone <input checked="" type="checkbox"/> On-site
Presence of multilingual staff	YES
Presence of plant plan with key to services available	NO
Presence of visuo-tactile map	NO
Bulletin board/information panels at an average height of 130 cm in a well-lit area	NO





and font size at least 14 dpi with a contrast ratio greater than 4.5:1	
The staff attended training courses on welcoming people with different disabilities	NO

### Bar/restaurant

Type of venue	missing
---------------	---------

### Internal Pathways and common services

#### Internal Pathways



Indicate whether the pathways connecting the entrance to the beach are flat or with ramps in addition to those already described	Obstacle-free paths
--	---------------------

### Toilet and shower accessible to guests with reduced mobility

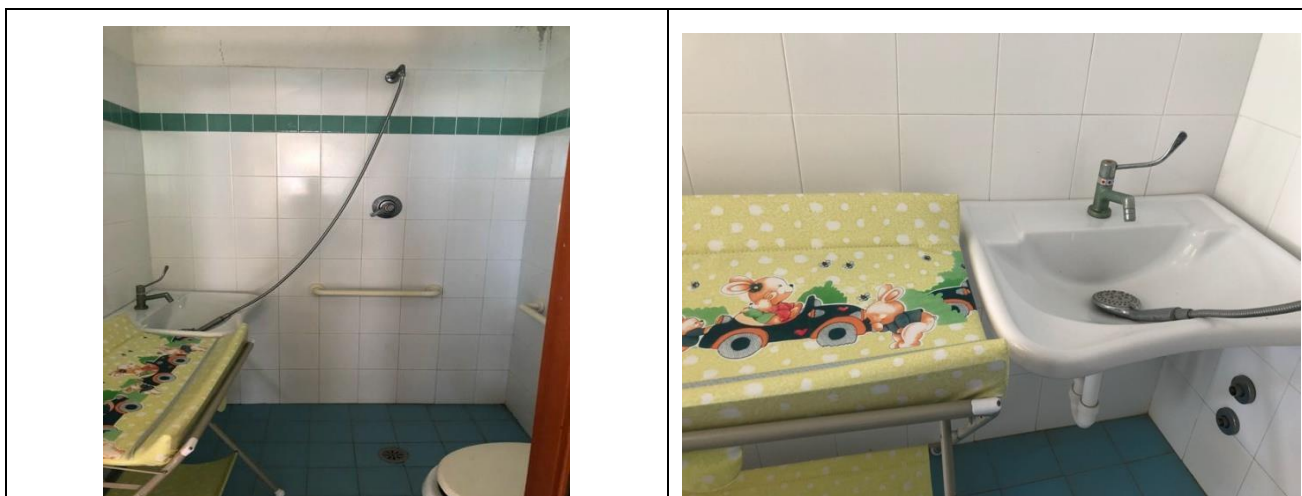
Number <b>of toilets</b> accessible/usable by guests with reduced mobility	1
Access to the premises	through 2 ramps: the first length cm, 80 cm wide, 100 cm slope; 8.9%; second length 200 cm, width 100 cm, slope 15.5%
Usable width of the entrance door	more than 90 cm
Toilet height	50 cm
Open front toilet seat	YES
Support handles	to the right of the toilet
Flexible hand shower at the side of the toilet	NO
Free space on the sides of the toilet	left cm 30 right more than 90 cm frontal more than 90 cm





Electric doorbell/phone	YES
Washbasin with space underneath for wheelchair	cm 74
Height from the ground on the bottom edge of the mirror	Cm 100
Baby changing table	YES
	
Accessible <b>shower</b> available for guests with reduced mobility	YES in common with the toilet room
Shower type	open-type
Floor-level shower	YES
Shower chair	missing
Grab bar	YES
Presence of shower head or ups and downs	Sliding rails with lowest point height cm 210
Electric doorbell/phone	YES





**Changing room**

Accessible changing room available for guests with reduced mobility	NO
---	----

**Beach**

Type of beach	sand
Access to the beach	Flat
Walkway to reach the umbrellas	YES
Type of walkway	PVC
Walkway width	90 cm





<p>Removable Platform between the walkway and the umbrella station to facilitate the passage and parking wheelchair</p>	<p>NO</p>
<p>Amphibious beach chair available for helping people with reduced mobility to enjoy swimming (owned by the establishment or by association)</p>	<p>YES</p>

### Children's play area

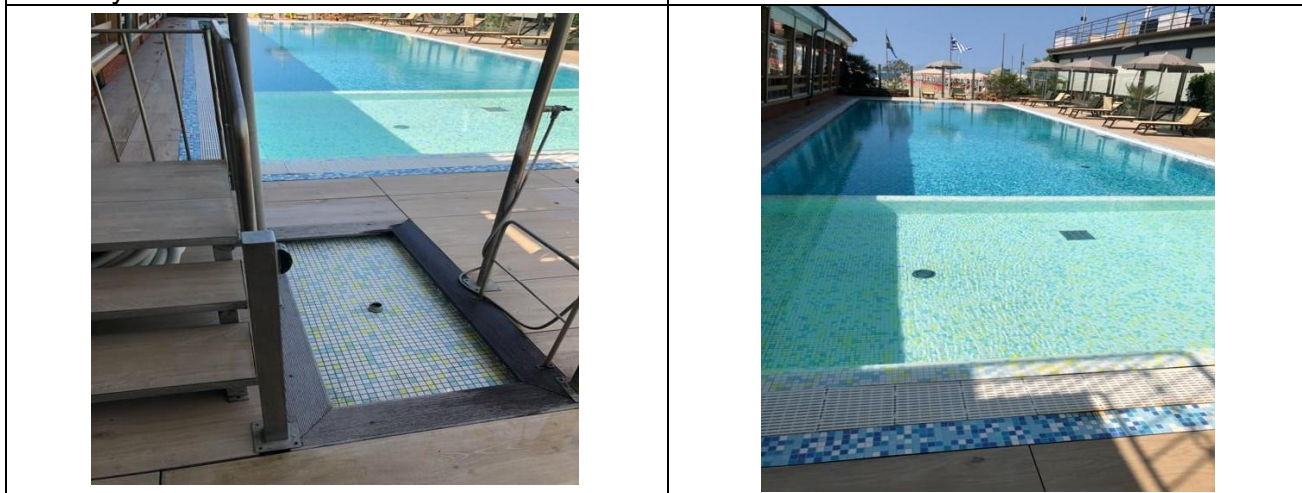
<p>Children's play area</p>	<p>inaccessible to children with reduced mobility due to sandy bottom</p>
<p>There are games for children with reduced mobility</p>	<p>NO</p>





**Swimming pool**

The property has a swimming pool	YES
Access to the swimming pool	by ramp length 180 cm, width 96 cm, slope 2.8%
Useful width of the entrance gate	more than 90 cm
Access to the pool	with ladder
Bathing aids for guests with reduced mobility	Not present





## Doctors' Offices/Healthcare Facilities

Hospitals near the facility	Ospedale Versilia ss1, 335 Camaiore tel 0584/6051
Other Healthcare Facilities	<p><b>Emergency medical service Camaiore</b> tel. 0584/616775 Distretto Sanitario ASL N. 12 Viareggio Via Sant'Elme, 30 Tel. 058483873</p> <p><b>Croce Verde</b> Viale Italice, angolo via Risorgimento Tel. 058484013 Free First Aid for white codes <b>Night medical guard</b> Tel. 0584 83896 (h. 20-8)</p> <p><b>Misericordia</b> Via P. I. da Carrara, 32 Tel. 0584752133/0584 752149</p> <p><b>Medical service "San Camillo" Nursing Home</b> Via P.I. da Carrara, 37 Tel. 0584 7391</p> <p><b>Dialysis service c/o Croce Verde</b> Viale Italice, corner of Via Risorgimento Tel.058484013 affiliated with AUSL</p>

TESTED BY: Handy Superabile Social Promotion Association in summer 2023

